

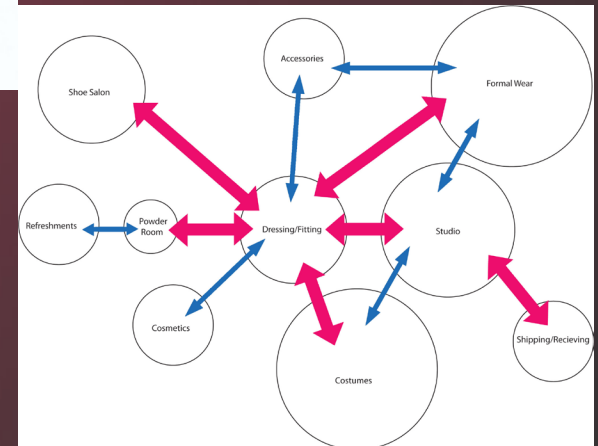
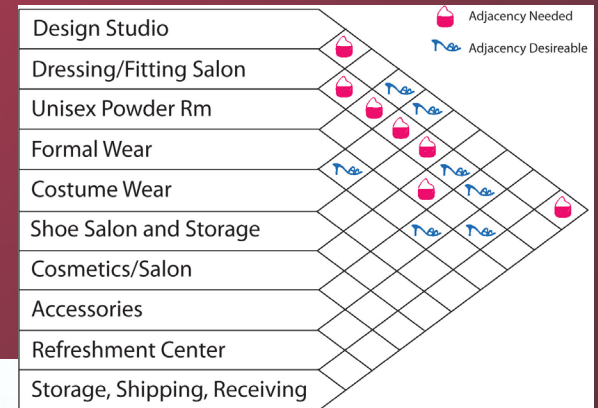
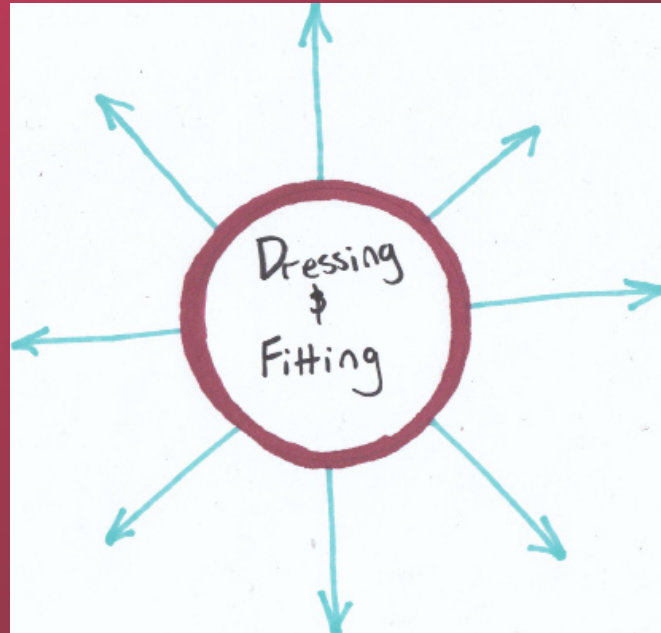
# *Dramatic Fashion*



Chelsea Pitts  
Spring 2013  
Studio 8

# Pre-Design & Concept

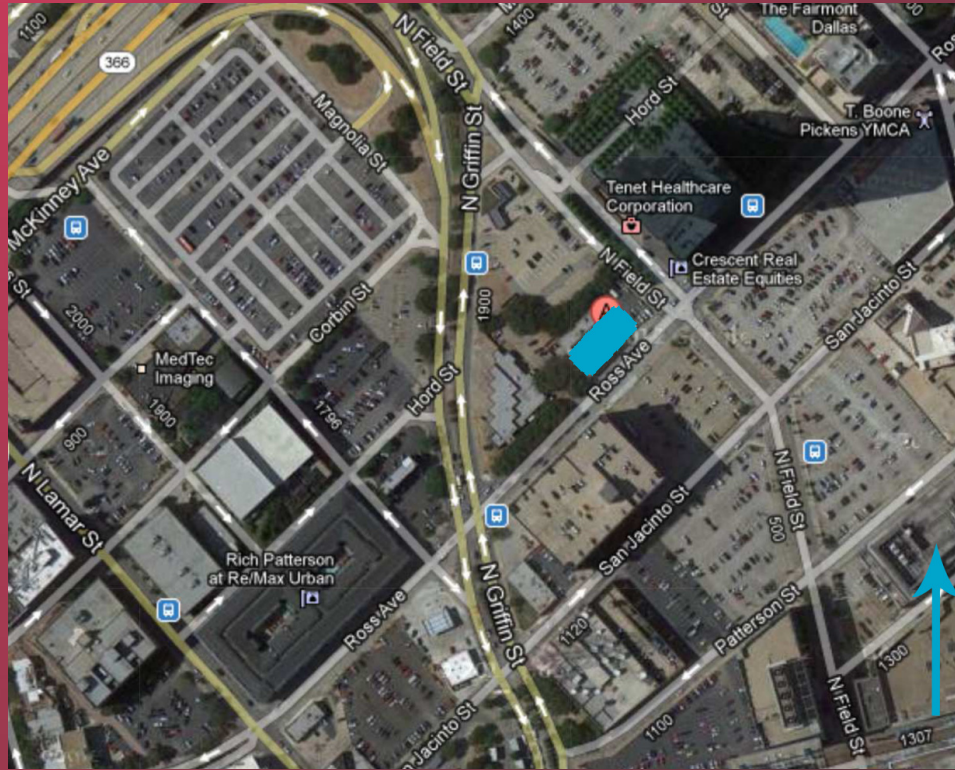
The concept of this design is to convey the *Drama of Fashion* through the experience of *Backstage* preparation culminating in the *Performance*.



# Location and Client

This project is located in Dallas, TX. I chose to further locate it in the Dallas Arts District.

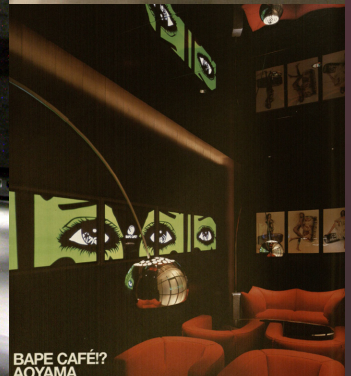
I changed the program by making the client a fashion and high-end costume designer. This influenced my design heavily.





# Inspiration Images

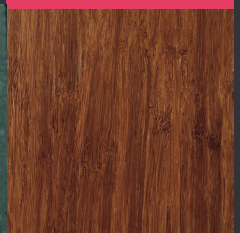
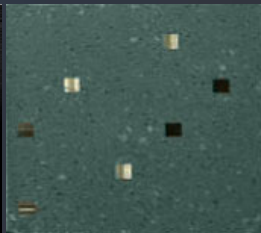
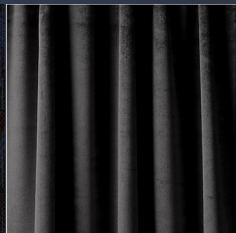
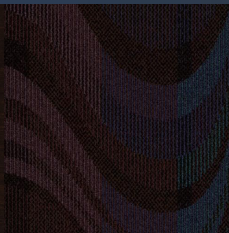
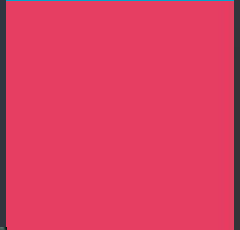
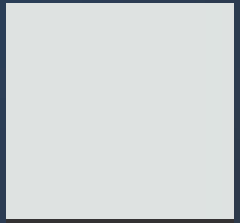
The colors for this project were inspired by popular prom dress colors.





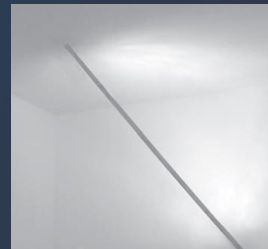
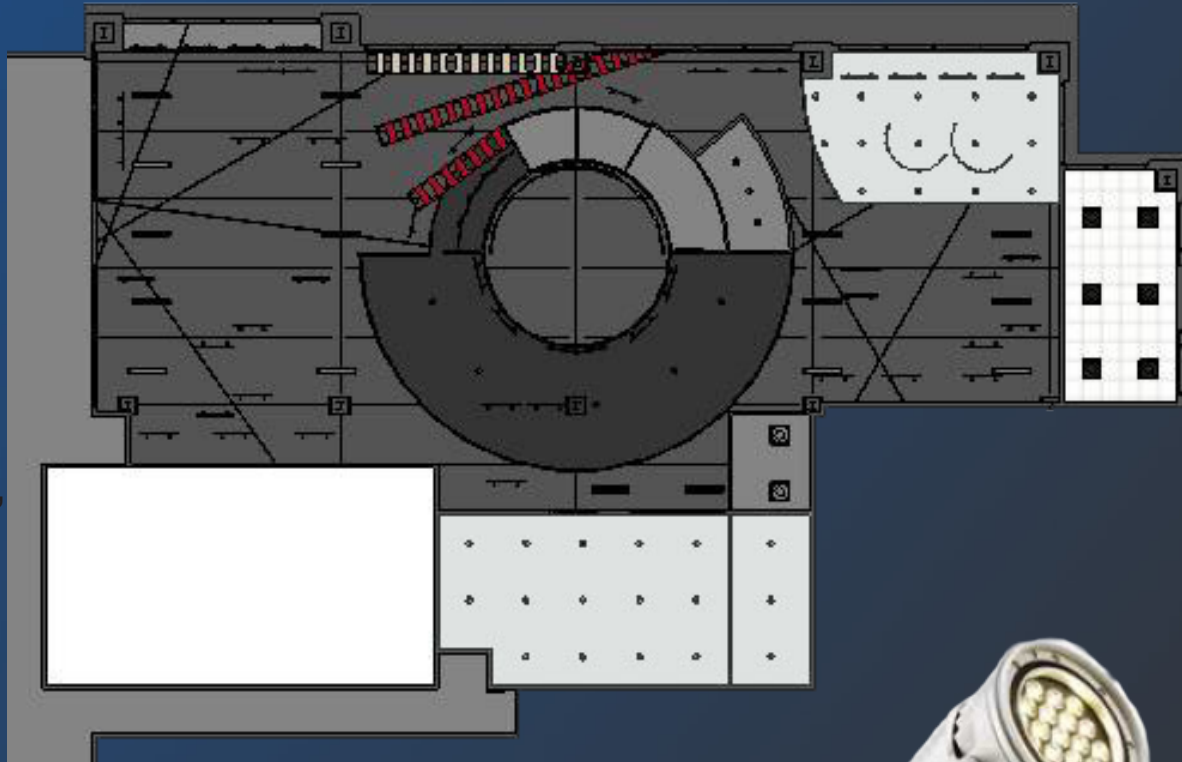
# Plan View

The colors on the right are the paint colors used in this project. Below is the flooring. The corner is the casework material, counter material, and velvet curtain.



# Reflected Ceiling Plan

The two main light fixtures are a semi-direct fluorescents and LED track lights. There is some special lighting in the fitting, dressing, and main retail areas.

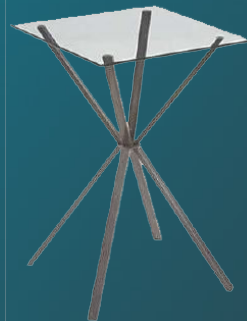




# *Accessories, Fashion Wear, & Costume Wear Areas*

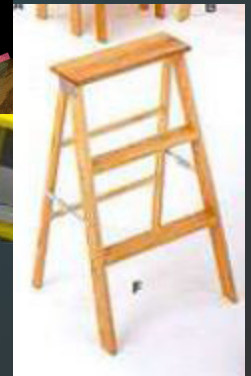
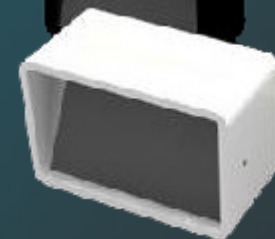
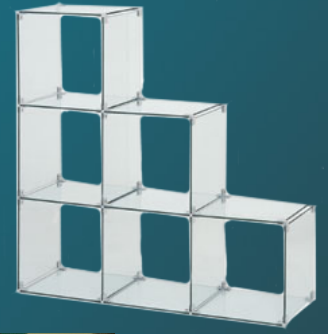


The middle view shows the accessory area and display window. The view in the upper corner is of the costume wear area. This is where the pre-made costumes are kept. Costumes in this area can be rented or bought and are intended for individuals, not theaters.



# Shoe Area

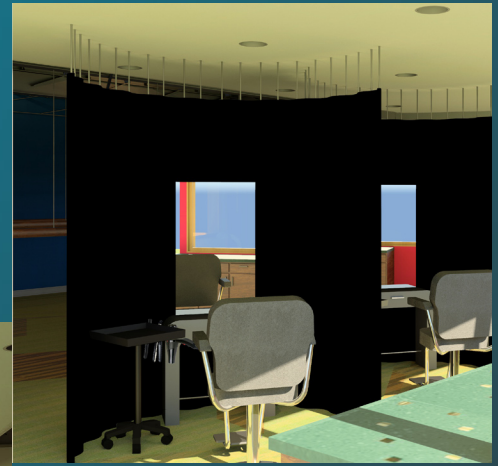
The colors on the right are the paint colors used in this project. Below is the flooring. The corner is the casework material, counter material, and velvet curtain.





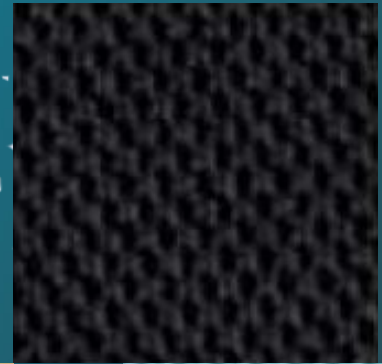
# Cosmetic Area

These views are of the cosmetics area. Here people can get their hair done for special occasions. Makeup and hair tips and products can be found in this area. The curtains give the person in the chair a sense of privacy.



# *Design Studio*

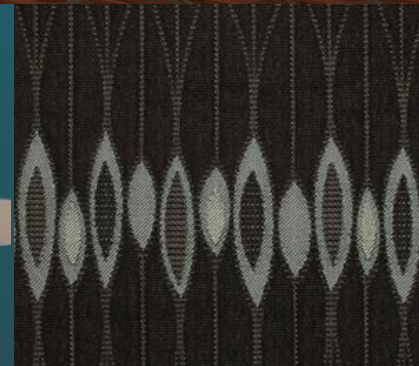
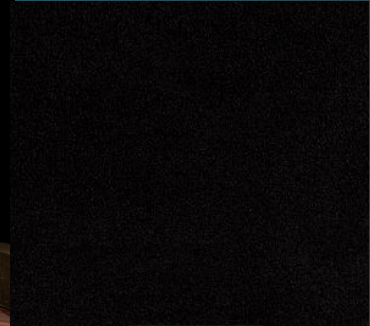
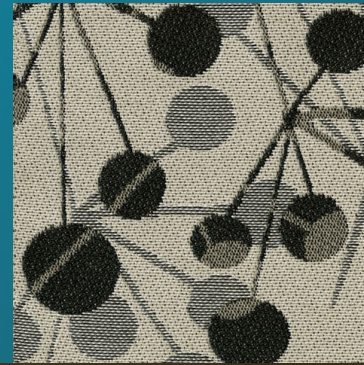
The design studio is not only where the designer designs, but also where the pieces are created. Windows let customers see the design process and feel more connected to the designer.





# Dressing Rooms and Fitting Area

The dressing rooms and fitting area are the main event of this design. This space is based on the idea of a black box. Various types of seating are provided for friends and family of customers.



# Logo Feature Wall

The logo for this boutique is based on a Masquerade mask. Masks have been used in theatre for centuries and are an important part of many costumes.

